

# FOR LEASE

Creative Loft Space next to South Park



## ADDRESS

599 3rd Street (@ Brannan St.)  
San Francisco, CA 94103

SUITE	SIZE	RATE	AVAILABLE
Unit 210	1,693 sqft	\$3.50 psf/month	Now
Unit 309	2,066 sqft	\$3.50 psf/month	Now

## FEATURES

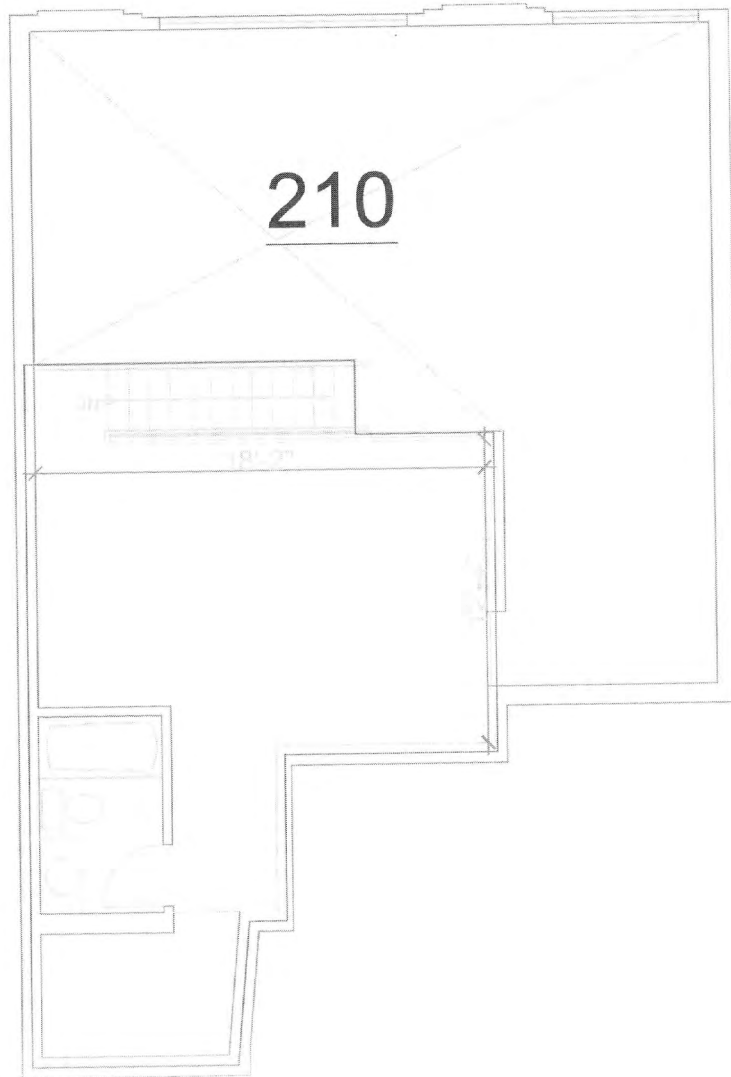
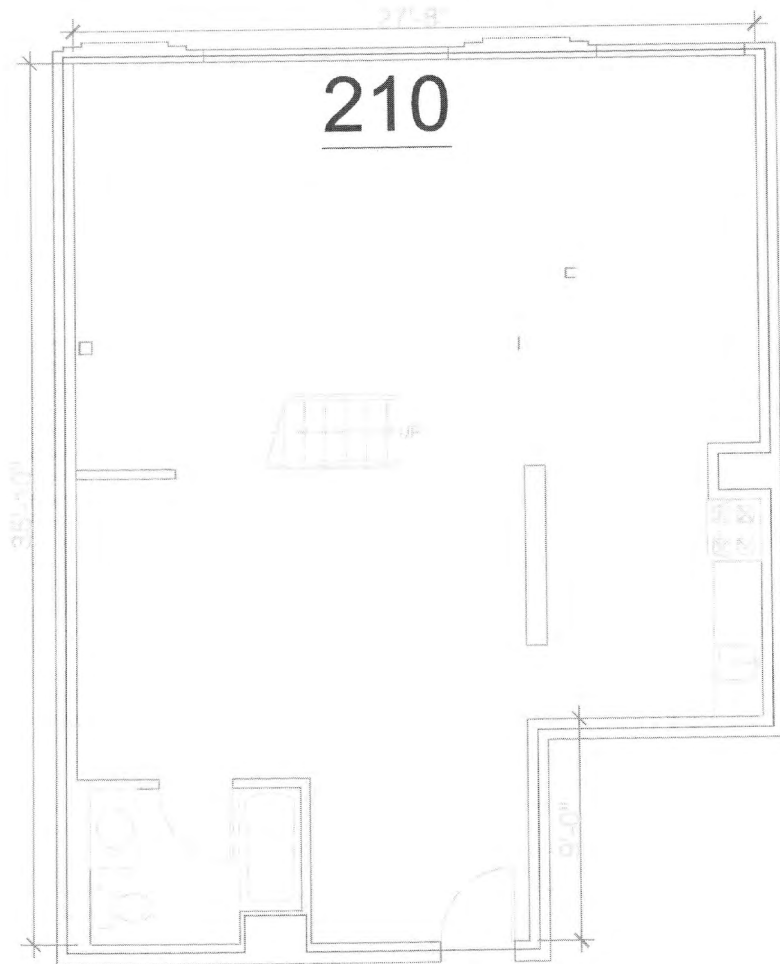
- » Turn-key space
- » Open floor plans
- » High Ceilings
- » Natural Light
- » Concrete floors
- » Private bathroom and kitchen
- » HVAC in each unit
- » Min 2 year term

## LOCATION

- » Prime SOMA Location next to South Park
- » Great car and foot traffic
- » Parking available
- » Walk to Muni, BART or CalTrain
- » Numerous nearby restaurants, bars and cafes

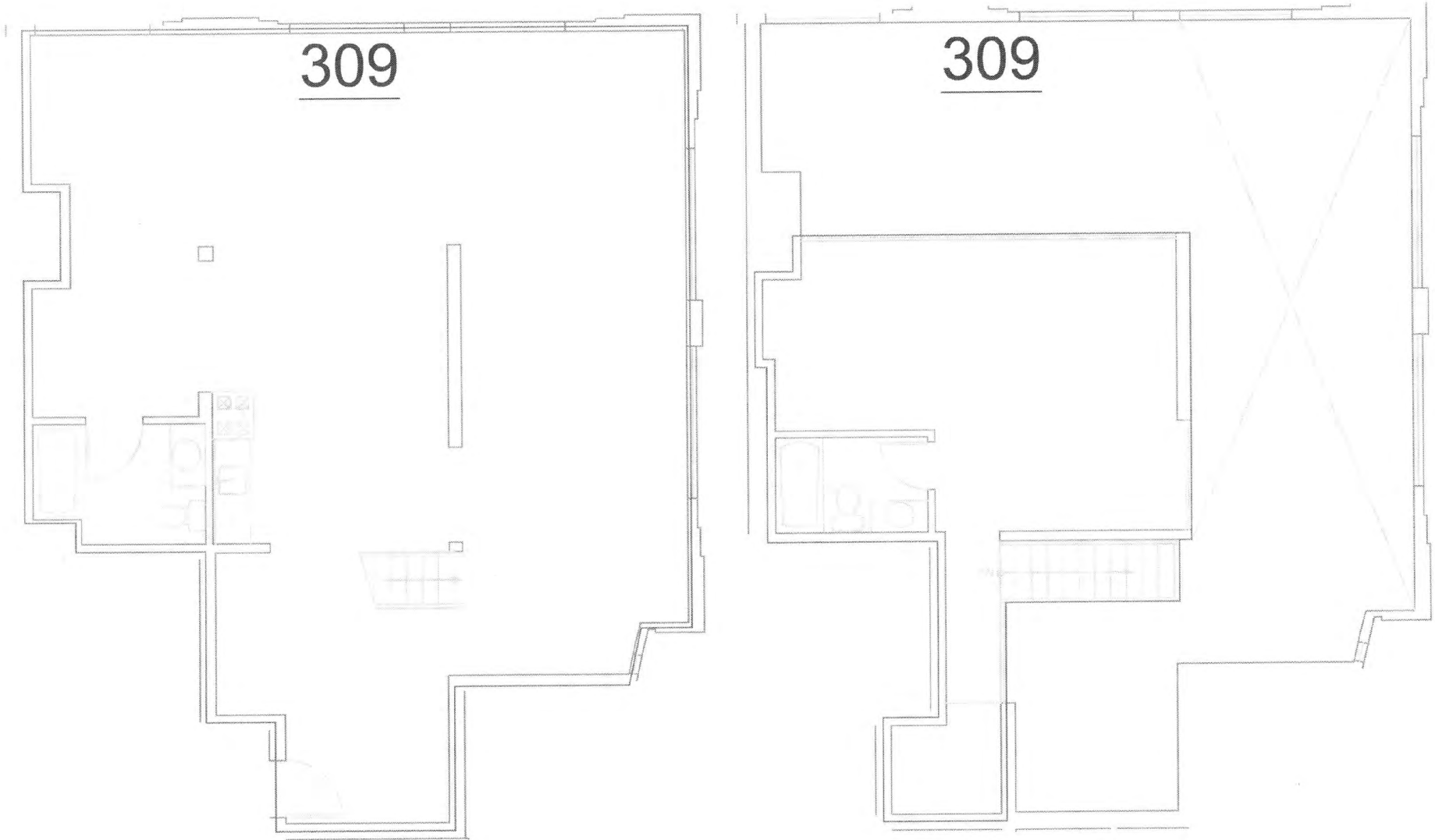
# FOR LEASE

Creative Loft Space next to South Park



# FOR LEASE

*Creative Loft Space next to South Park*



Commercial Properties

*The information contained herein has been obtained through sources deemed reliable, but cannot be guaranteed for its accuracy*

BEN DURHAM  
+1 415 865 6106  
bdurham@hcmcommercial.com  
CA License No. 01211050