

FOR LEASE

Creative Loft Space next to South Park



ADDRESS

599 3rd Street (@ Brannan St.)
San Francisco, CA 94103

SUITE	SIZE	RATE	AVAILABLE
Unit 210	1,693 sqft	\$3.50 psf/month	Now
Unit 211	2,639 sqft	\$3.50 psf/month	Now
Unit 308	1,695 sqft	\$3.50 psf/month	Now
Unit 309	2,066 sqft	\$3.50 psf/month	Now

FEATURES

- » Turn-key space
- » Open floor plans
- » High Ceilings
- » Natural Light
- » Concrete floors
- » Private bathroom and kitchen
- » HVAC in each unit
- » 1+ year terms

LOCATION

- » Prime SOMA Location next to South Park
- » Great car and foot traffic
- » Parking available
- » Walk to Muni, BART or CalTrain
- » Numerous nearby restaurants, bars and cafes



Commercial Properties

The information contained herein has been obtained through sources deemed reliable, but cannot be guaranteed for its accuracy

BEN DURHAM

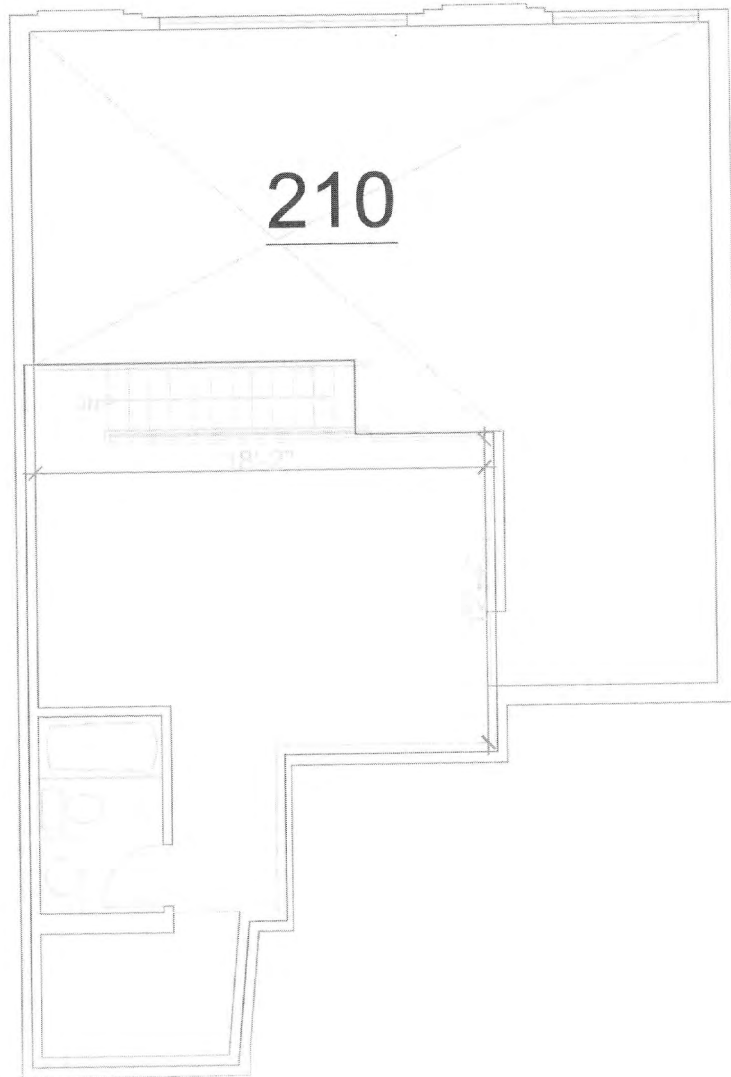
+1 415 865 6106

bdurham@hcmcommercial.com

CA License No. 01211050

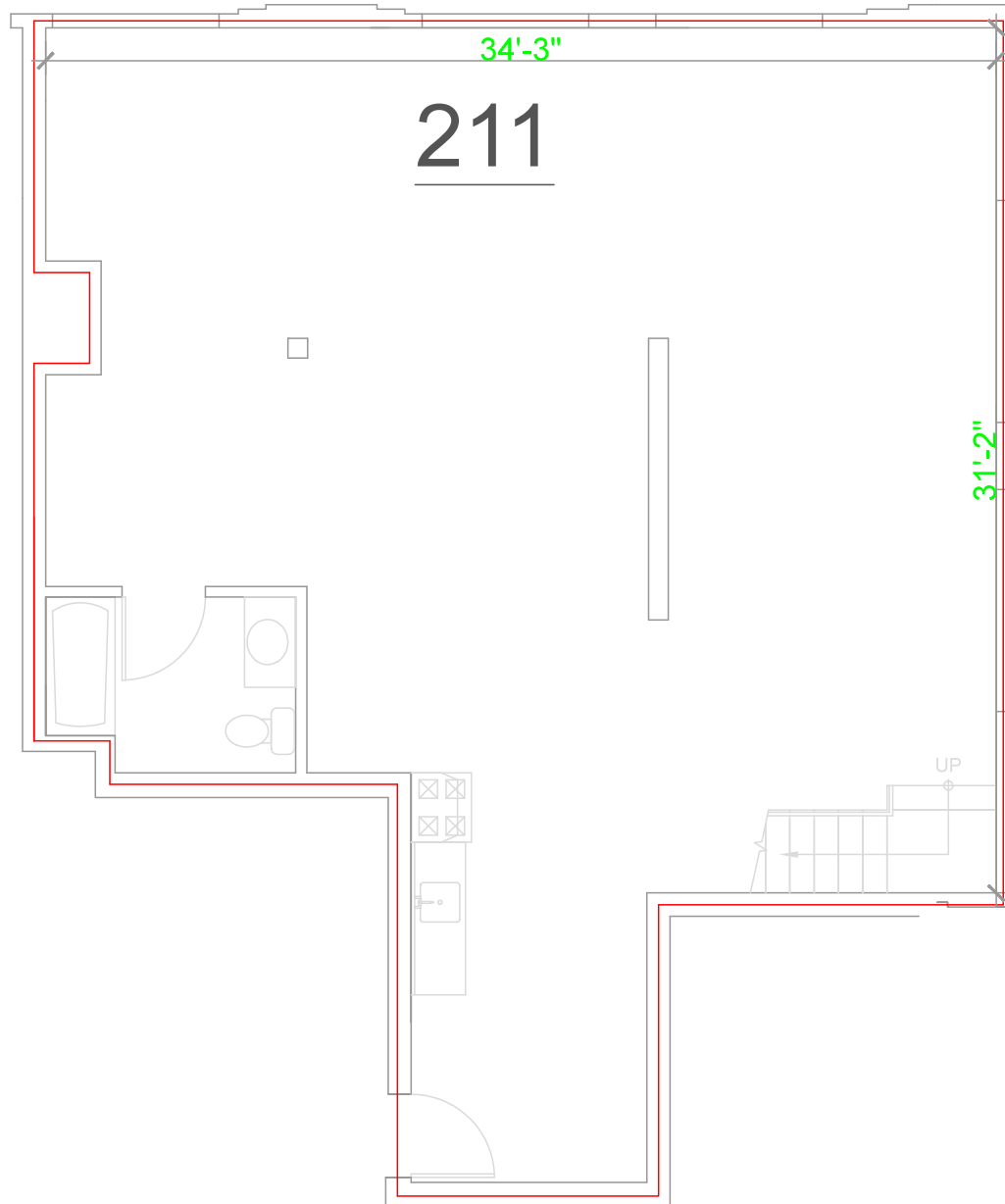
FOR LEASE

Creative Loft Space next to South Park



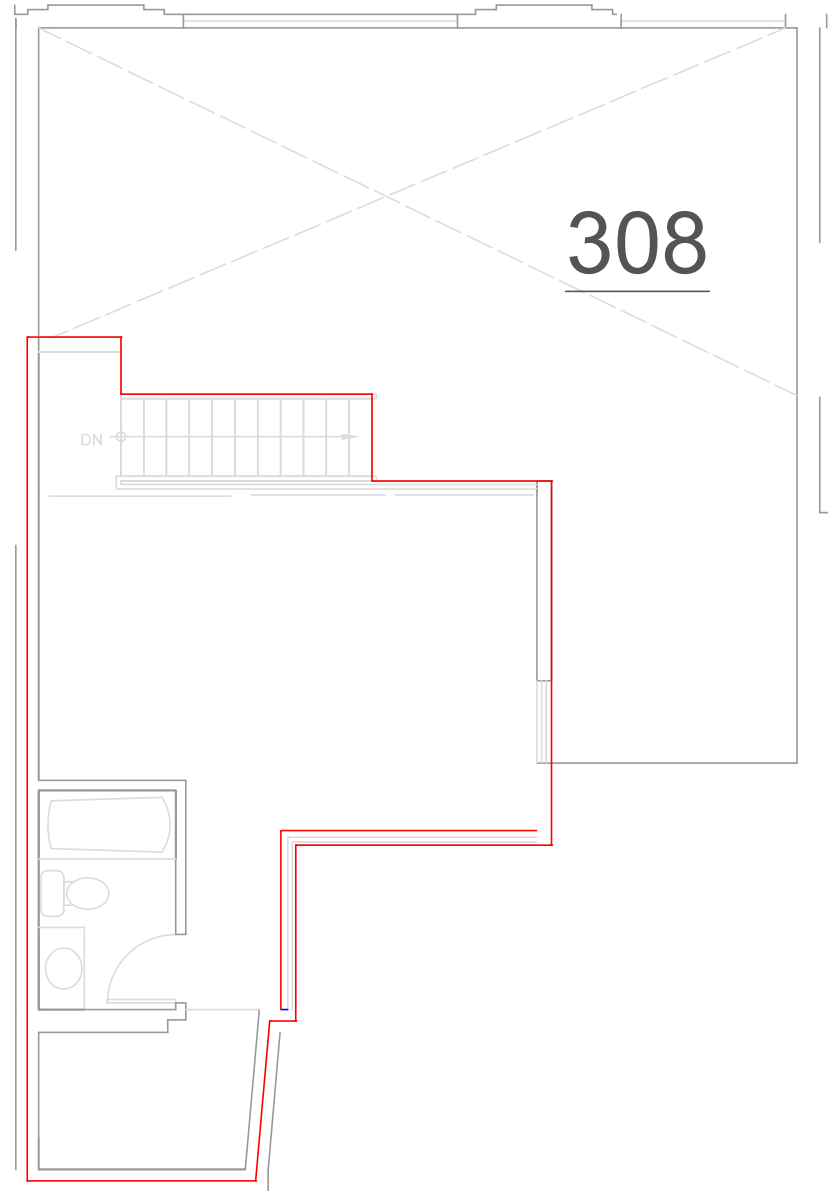
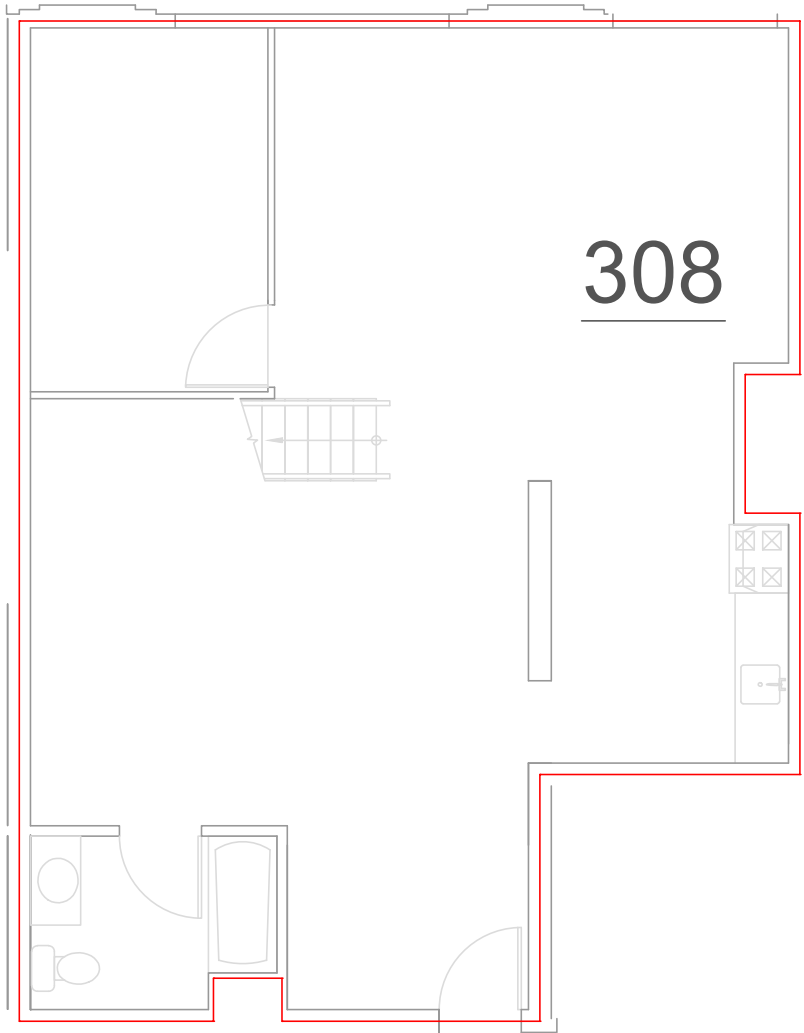
FOR LEASE

Creative Loft Space next to South Park



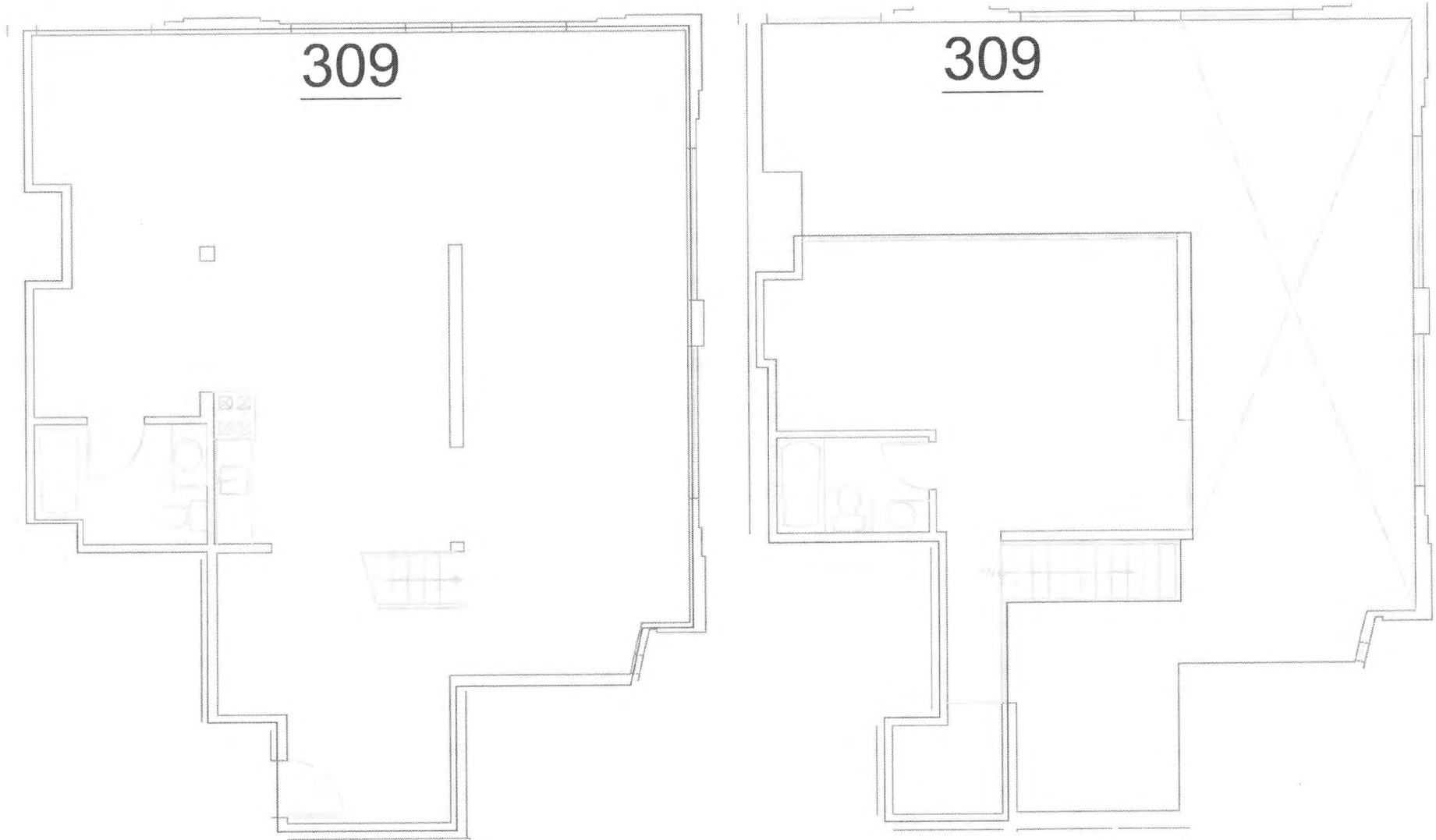
FOR LEASE

Creative Loft Space next to South Park



FOR LEASE

Creative Loft Space next to South Park



Commercial Properties

The information contained herein has been obtained through sources deemed reliable, but cannot be guaranteed for its accuracy

BEN DURHAM
+1 415 865 6106
bdurham@hcmcommercial.com
CA License No. 01211050