

Potrero Hill Office for Lease

1501 Mariposa Street, San Francisco



Potrero Hill Office for Lease

1501 Mariposa Street, San Francisco



SUITE	SIZE	RATE	TERM
Unit 408	1,135 sqft	\$3.00 psf/month Modified Gross	1-5 years
Unit 416	852 sqft	\$2.30 psf/month Modified Gross	1-5 years
Unit 428	2,109 sqft	\$3.00 psf/month, Modified Gross	1-5 years

FEATURES

- » Open plan layout
- » Exposed ceilings, ductwork, columns
- » Polished concrete Floors
- » Kitchenette
- » Individualized HVAC control
- » Operable windows
- » Nice window treatments

LOCATION

- » Views of SOMA, Rincon Hill, Downtown
- » Across from Jackson Playground
- » Easy access to HWY 101 & 280
- » Within 1/2 mile of Mission Bay Development
- » Close to Muni Lines 10, 19 & 22



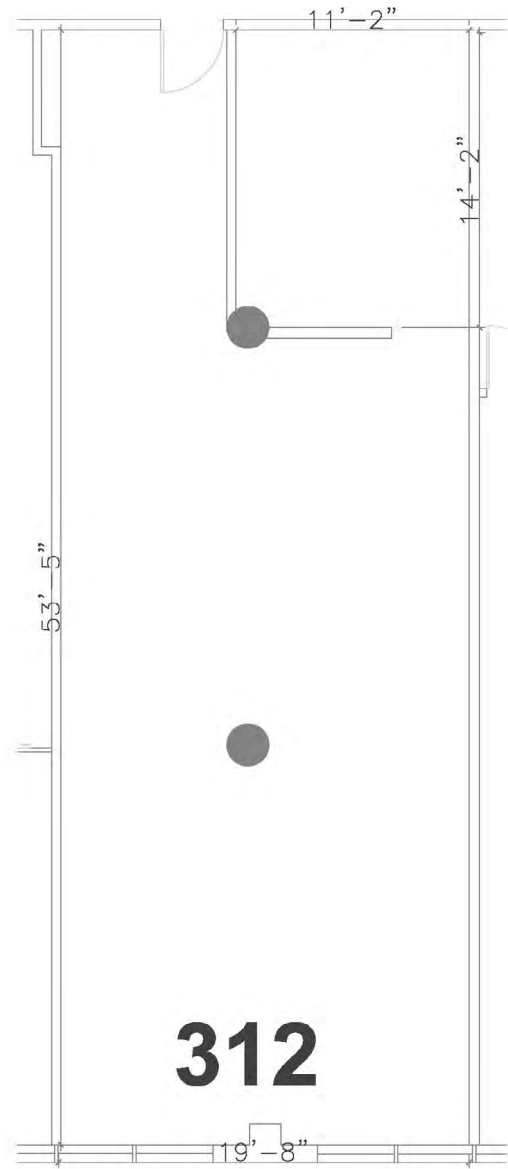
Commercial Properties

The information contained herein has been obtained through sources deemed reliable, but cannot be guaranteed for its accuracy

BEN DURHAM
+1 415 865 6106
bdurham@hcmcommercial.com
CA License No. 01211050

Floor Plans

1501 Mariposa Street, San Francisco



Floor Plans

1501 Mariposa Street, San Francisco

