

Potrero Hill Office Suites for Lease

1501 Mariposa Street, San Francisco



Potrero Hill Office Suites for Lease

1501 Mariposa Street, San Francisco



ADDRESS

1501 Mariposa Street
San Francisco, CA 94103

SUITE	SIZE	RATE
Unit 318	1,863 sqft	\$2.30 psf/month, MG
Unit 418	1,323 sqft	\$3.00 psf/month, MG
Unit 422	2,033 sqft	\$2.10 psf/month, MG

FEATURES

- » Open plan layouts
- » Private Offices
- » Conference Rooms
- » Exposed ceilings, ductwork, columns, concrete walls
- » Shared kitchen on each floor
- » Individualized HVAC control

LOCATION

- » Views of SOMA, Rincon Hill, Downtown
- » Sunny Potrero Hill location across from Jackson Playground
- » Easy access to HWY 101 & 280
- » Within 1/2 mile of Mission Bay Development
- » Close to Muni Lines 10, 19 & 22

** Photos are of Sample Units*



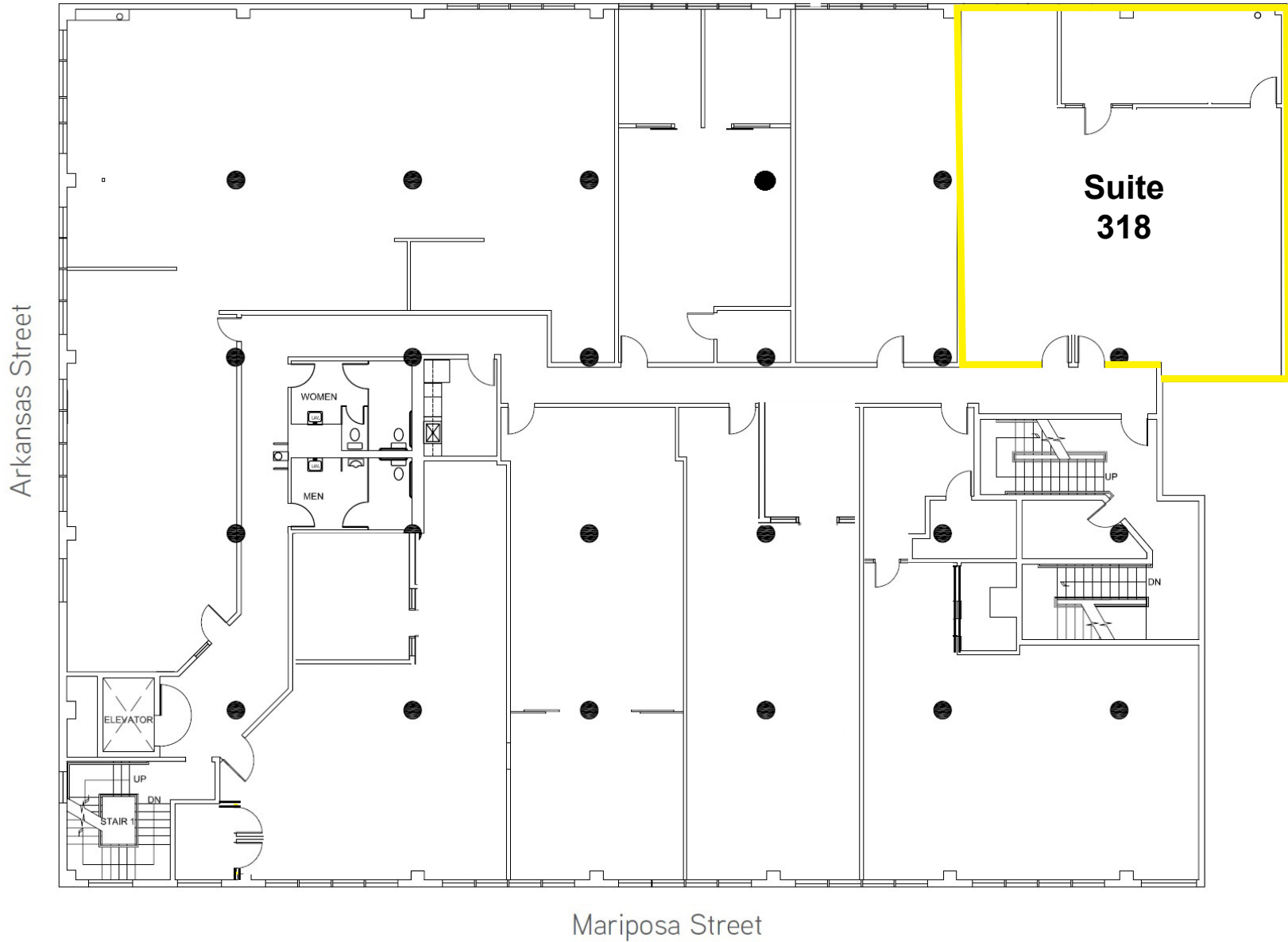
Commercial Properties

The information contained herein has been obtained through sources deemed reliable, but cannot be guaranteed for its accuracy

BEN DURHAM
+1 415 865 6106
bdurham@hcmcommercial.com
CA License No. 01211050

Floor Plans

1501 Mariposa Street, San Francisco



Floor Plans

1501 Mariposa Street, San Francisco

